



Colin Dobbyne
Safari Specialist for Tanzania
Extreme Expedition Tours Limited

+44 7966 402359

colin@extremeexpedition.tours
<https://www.extreme-expedition.com>



Safari Kipekee - Private Camp Safari - 6 or more nights - 2 to 30 people

Safari Kipekee is the ultimate safari; a luxury retro-style safari capturing the romance of the golden age of African exploration. The group will enjoy each camp on an exclusive basis and live the "Out of Africa" experience of being alone and at one with the natural world.

Safari Kipekee takes its name from the Swahili word for 'exclusive' and is a safari staying in wonderful luxury tents on an exclusive basis where each tent has en-suite facilities, a butler, camp tent attendants and a personal chef. It is perfect for intimate groups or families seeking privacy in sharing the experience of the wonders of Tanzania.

This unique safari deploys two crews and two identically configured tented camps. While the group are enjoying their stay in camp 1, camp 2 is being erected ready for their arrival. While the guests are then exploring around camp 2, camp 1 is struck and transported to the next camp location. We have the freedom to roam and take you to places not normally found on standard tours; such as Lobo in the Serengeti, Ndutu and Klein's gate and the shores of Lake Natron, often teeming with flamingos.

Safari Kipekee is undoubtedly the most authentic and varied safari tour in the world and perfect for absolutely everyone - it is a great option for high-profile or VIP individuals where privacy is an absolute requirement and comfort guaranteed.

Trip Summary

DAY 1: Arrival Day and Relax at Hamerkop House Exclusive Villa, Gran Melia Hotel or Arusha Coffee Lodge

Collection from Kilimanjaro Airport and Transfer

Hamerkop House, Arusha

Optional: Gran Meliá Arusha - Gran Meliá Arusha

Optional: Arusha Coffee Lodge

Day 2: Tarangire National Park and Extreme Expedition Private Camp, Tarangire

Tarangire National Park

Extreme Expedition Private Camp, Tarangire

Day 3: Tarangire National Park and Extreme Expedition Private Camp, Tarangire

Tarangire National Park

Extreme Expedition Private Camp, Tarangire

Day 4: Game Drive to Extreme Expedition Private Camp, Ngorongoro Crater Rim

Ngorongoro Crater View

Extreme Expedition Private Camp 2, Ngorongoro Crater

Day 5: Ngorongoro Crater and Extreme Expedition Private Camp, Ngorongoro Crater Rim

Ngorongoro Crater Tour

Extreme Expedition Private Camp 2, Ngorongoro Crater

Day 6: Ndutu and Extreme Expedition Private Camp, Ndutu

Ndutu, Southern Serengeti

Extreme Expedition Private Camp, Ndutu

Day 7: Ndutu and Extreme Expedition Private Camp, Ndutu

Ndutu, Southern Serengeti

Extreme Expedition Private Camp, Ndutu

Day 8: Serengeti Central and Extreme Expedition Private Camp, Central Serengeti

Serengeti Central Game Drive

Extreme Expedition Private Camp 2, Central Serengeti

Day 9: Central Serengeti and Extreme Expedition Private Camp, Central Serengeti

Serengeti Central Game Drive

Extreme Expedition Private Camp 2, Central Serengeti

Day 10: North Serengeti and Extreme Expedition Private Camp, Kogatende

Serengeti North Game Drive

Extreme Expedition Private Camp, Kogatende

Day 11: Serengeti North and Extreme Expedition Private Camp, Kogatende

Serengeti North Game Drive

Extreme Expedition Private Camp, Kogatende

Day 12: Game drive to Lobo, Serengeti and Extreme Expedition Private Camp, Lobo Serengeti

Serengeti North Game Drive

Extreme Expedition Private Camp 2, Lobo Serengeti

Day 12: Serengeti North and Extreme Expedition Private Camp, Lobo Serengeti

Serengeti North Game Drive

Extreme Expedition Private Camp 2, Lobo

Day 11: Travel to Lake Natron and Extreme Expedition Private Camp, Lake Natron

Journey to Lake Natron

Extreme Expedition Private Camp, Lake Natron

Day 12: Explore Lake Natron and Extreme Expedition Private Camp, Lake Natron

Lake Natron

Extreme Expedition Private Camp, Lake Natron

Day 13: Flight to Arusha and Hamerkop House, Gran Melia Hotel or Arusha Coffee Lodge

Drive to Arusha

Explore Mto Wa Mbu

Hamerkop House, Arusha

Optional: Gran Meliá Arusha - Gran Meliá Arusha

Optional: Arusha Coffee Lodge

Day 14: Departure Day, Kilimanjaro Airport

Transfer to Kilimanjaro Airport

DAY 1: Arrival Day and Relax at Hamerkop House Exclusive Villa, Gran Melia Hotel or Arusha Coffee Lodge



Collection from Kilimanjaro Airport and Transfer

We will be eagerly awaiting you just outside the arrivals hall with a jeep or SUV to welcome you to Tanzania and transfer you to your first lodge to relax and acclimatise to the sights and sounds of Africa!



Hamerkop House, Arusha

This private house is located on a wildlife and golf estate, Kiligolf, situated halfway between Kilimanjaro International Airport and Arusha, and offers a great place to start or finish your safari. It is perfect for families or groups travelling together. Each bedroom is en suite with a private veranda and lounge. The house is taken on a private and exclusive use basis on full board or all-inclusive.

The lounge and dining are open onto a private pool set in the verdant gardens.



Optional: Gran Meliá Arusha Location

For those wishing to top and tail their safari with a familiar 5-star international resort-style hotel, then The Gran Meliá is my favourite of them all. A great vibe in the bar, superb views, various restaurants to choose from cuisine around the world, and is perfectly located in Arusha.

Facilities

This spectacular hotel is located between the Serengeti and Kilimanjaro National Parks, opening out onto all of Tanzania's majestic natural beauty. An oasis of five-star comfort and elegance, with extensive, unbeatable facilities, exclusive suites, and international cuisine, including the outstanding The Grill restaurant. With spa, infinity pool and gym. Perfect for a safari trip or luxurious business meeting.

The stunning Gran Meliá Arusha rises up between coffee and tea plantations. An exquisite first-class hotel with a wide range of luxurious comforts, located in a privileged natural environment. African exoticism and attention to detail, with a modern conference center and the personalized assistance of our RedLevel service.



Gran Meliá Arusha
Simeon Road, Arusha, Tanzania



Optional: Arusha Coffee Lodge

There is another option to stay at Arusha Coffee Lodge, the world famous lodge in Arusha that blends superb comfort and elegance with an African spirit and style. This option is on a non-exclusive basis.

Lying on the gently rolling foothills that cascade down from the ever-present Mount Meru is the bustling and vibrant town of Arusha. It is here on the outskirts of this town, hidden amongst one of Tanzania's largest coffee plantations, that you will find Arusha Coffee Lodge, a perfect haven for relaxation either before or after any East African safari.

Comprising of 30 Plantation Houses that radiate out into the evergreen coffee fields, Arusha Coffee Lodge has been designed around the original landowner's home that dates back to the early 1900's.

Never far from the aroma of fresh coffee, the theme of coffee permeates throughout Arusha Coffee Lodge, reflecting in the colours and textures of the delightfully comfortable accommodations with beautifully appointed en suite bathrooms.



Day 2: Tarangire National Park and Extreme Expedition Private Camp, Tarangire



Tarangire National Park

Tarangire is one of my favourite parks and is the sixth largest park in the country with 2,850 square kilometres of wilderness and the perfect place to get to grips with life under canvas in the wilderness.

Elephants, and other animals, are always confident of finding water in Tarangire and in the driest of seasons they will dig the river bed or visit the swamp, a sort of water tank for the region. In desperate times, the elephants will strip the bark from the Baobab trees that define Tarangire and squeeze out the water.



Extreme Expedition Private Camp, Tarangire

Our Private Camp in Tarangire offers an authentic safari experience at the heart of the Tarangire National Park.

Your camp is staffed by private chefs, private butlers and private tent attendants, all of whom are on call to look after you and your group for the duration of your stay with us. Camp sizes may vary between one accommodation tent for two people up to a maximum of fifteen accommodation tents for a maximum of thirty people as required.

This camp offers an authentic safari experience in comfort and style with outstanding food.



Day 3: Tarangire National Park and Extreme Expedition Private Camp, Tarangire



Tarangire National Park

There is something for everyone in Tarangire and for the ornithologists there are also almost 600 species of birds to admire.

Being so large you need to spend time in Tarangire, exploring the different areas, and my personal favourite is Silale Swamp which has a wonderful picnic area.



Extreme Expedition Private Camp, Tarangire



You will return to camp in time for sundowners and to freshen up for dinner with a hot shower. After dinner you can relax by the campfire and chat about the day's highlights.

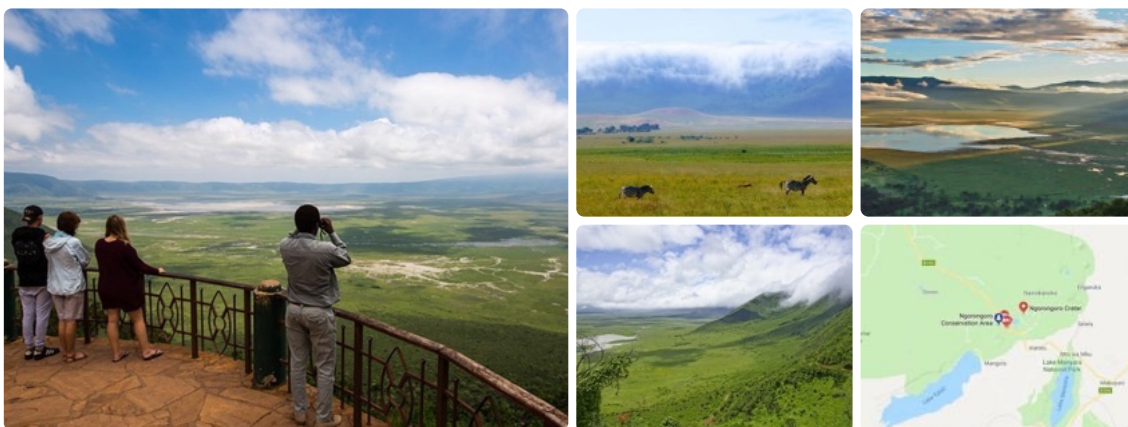


Day 4: Game Drive to Extreme Expedition Private Camp, Ngorongoro Crater Rim



Ngorongoro Crater View

The Ngorongoro Crater is the gateway to the Serengeti and we will stop at the view point to see the entire crater some 600 metres below. It is the world's largest caldera and hosts the highest concentration of wildlife in Africa.



Extreme Expedition Private Camp 2, Ngorongoro Crater

While you were enjoying the beautiful Tarangire, the crew will have erected your next camp on the crater rim.

Each sleeping tent measures 30 square metres (300 square feet) and consists of a verandah, bedroom area, dressing area and a separate shower and flush toilet.

As an added convenience, each tent is supplied with electricity for lighting as well as for charging mobile phones, cameras, laptop computers and any other electronic devices you may carry with you. This electricity is generated via a system of individual solar panels, chargers, batteries and inverters which are connected to each tent.

Camps can also be booked with up to two family tents. Family tents consist of a verandah, lounge, two bedrooms (each of which can be set up as singles, doubles or triples), two dressing areas and separate showers and toilets



Day 5: Ngorongoro Crater and Extreme Expedition Private Camp, Ngorongoro Crater Rim



Ngorongoro Crater Tour

The Ngorongoro Crater is the world's largest intact and unfilled volcanic caldera and the Ngorongoro Conservation Area's main tourists' attraction. It is the largest and most scenic crater in the Ngorongoro Conservation Area, with a large concentration of wildlife. It is also one of Africa's Seven Natural Wonders due to its breathtaking natural features. The Ngorongoro Crater is known as a home to over 25,000 animals, including the big five; elephants, buffaloes, rhinos, lions and leopards.

Other animals found in this crater include hippos, hyenas, warthogs, zebras, elands, gazelles, wildebeests, just to name a few. This makes Ngorongoro Crater probably the best site in Tanzania to spot and watch the big five as well as other wild species more easily.



Extreme Expedition Private Camp 2, Ngorongoro Crater

You will enjoy an early morning drive and breathtaking vista of the crater and have an hour's head start over others descending via the crater access road on the western rim. And of course you can stay later in the afternoon before returning to camp. As Africa's game is most active in the early morning and late afternoon this means better wildlife experiences.

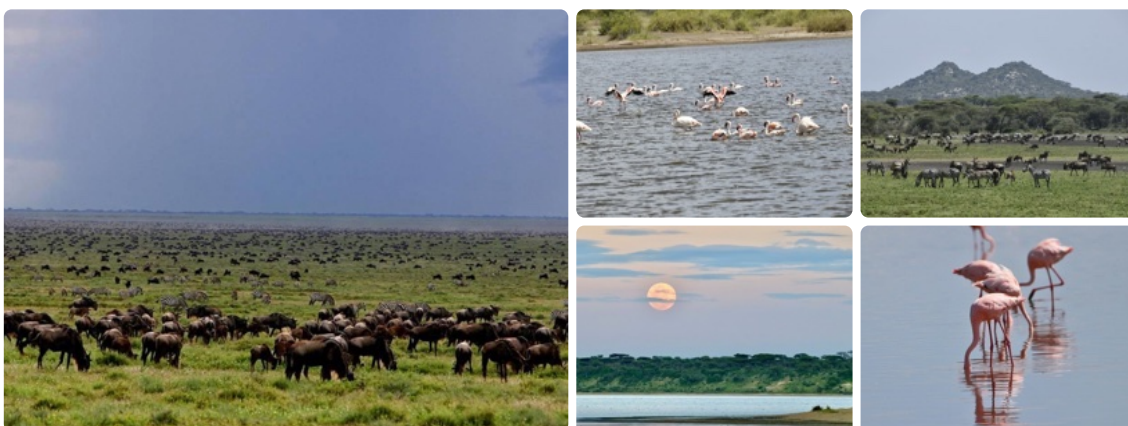


Day 6: Ndotu and Extreme Expedition Private Camp, Ndotu



Ndotu, Southern Serengeti

The Ndotu plains is located in the Ngorongoro Conservation Area, on the outskirts of the Southern Serengeti plains. These plains are enriched with tremendous acacia trees, providing a panoramic view across Lake Ndotu and Masek at the other end. It is one of the best places in the Ngorongoro Conservation Area to spot predators and enjoy the stunning landscapes. Standing here means you're in the midst of a calving ground for migratory wild animals, specifically the wildebeest migration. It is typically composed of vast swaths of short grassland, soda-lake Masek, marshes, and woodland vegetation that support both residents and migratory animals.



Extreme Expedition Private Camp, Ndotu

You will feel like you have returned home to your private camp, newly erected on the higher ground above Lake Ndotu for an authentic safari experience in comfort and style and enjoy an evening under the stars around the campfire while the local wildlife are chattering, chirping, roaring, or grunting in the background.



Day 7: Ndotu and Extreme Expedition Private Camp, Ndotu



Ndutu, Southern Serengeti

While Ndutu is an excellent game viewing area throughout the year, from the end of December, when the Great Migration herds arrive from the north, until April, millions of wildebeest, gazelles, and zebras can be seen all over the plains.

Thousands of calves are born within Ndutu during the calving season, making Ndutu a home for new creatures on Earth. Giraffe, impala, elephant, dik dik, lion, cheetah, leopard, hyena, bat-eared fox, genet, jackal, wildcat, and many other animals end up living in Ndutu. The plains, marshes, and lakes to woodland attract an abundance of bird species.



Extreme Expedition Private Camp, Ndutu

You will return to your Ndutu private camp where the team will be eagerly awaiting you with refreshments and to prepare a delicious dinner.

Another glorious evening under the stars around the campfire awaits you and a good night's sleep.



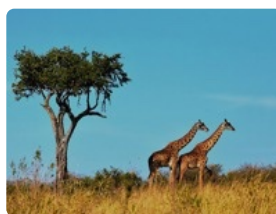
Day 8: Serengeti Central and Extreme Expedition Private Camp, Central Serengeti



Serengeti Central Game Drive

Today we will explore the vast Serengeti away from the crowds, around the plains and many rocky kopjes in search of big cats.

The big 5 are on everyone's list, and you're sure to see most if not all, but we might stumble upon an armadillo or the elusive leopard or even a serval or caracal cat. The beauty of the Serengeti is that you never know what you will find. there is always a surprise!



T

Extreme Expedition Private Camp 2, Central Serengeti

Another day in paradise as we explore the area and take a lunch in the bush. After an afternoon game drive we will return to camp in time for a sundowner and watch the sun set over the Serengeti Plains.

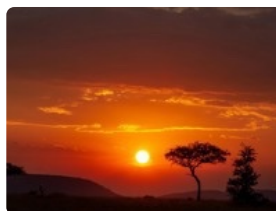
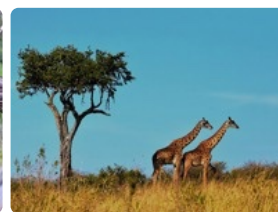


Day 9: Central Serengeti and Extreme Expedition Private Camp, Central Serengeti

T

Serengeti Central Game Drive

A day to explore the vastly diverse wildlife of the Central Serengeti which has high-density game-viewing at all times and is well-known for its large concentration of cats, so much so that until recently this area was set aside for scientific research into predators, especially cheetah.



T

Extreme Expedition Private Camp 2, Central Serengeti

Another day in the wilds of Africa as we explore the area and take a lunch in the bush. After an afternoon game drive we will return to camp in time for a sundowner and watch the sun set over the Serengeti Plains.

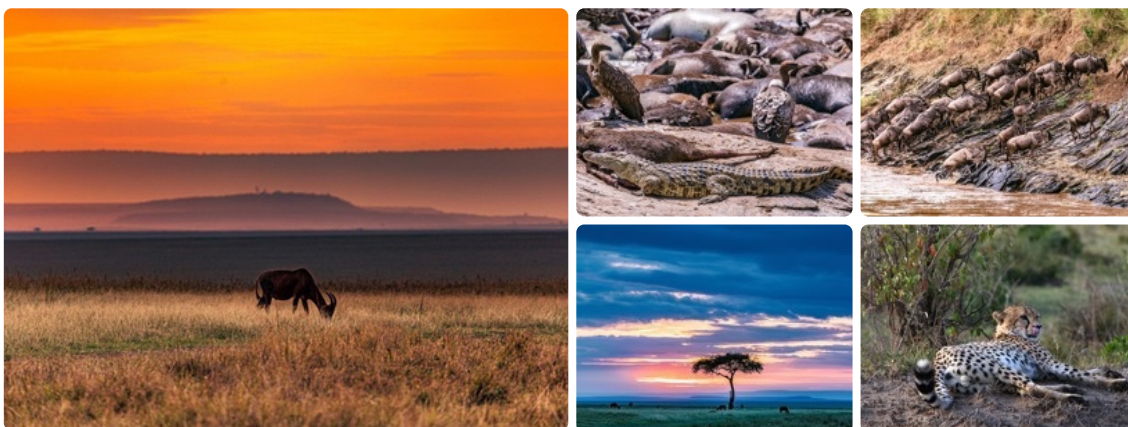


Day 10: North Serengeti and Extreme Expedition Private Camp, Kogatende



Serengeti North Game Drive

Between June and November is the time to be in this exciting area as thousands of wildebeest, zebras and gazelles will be edging to the river banks until the pressure is so strong behind that they launch themselves into the river to follow the fresh grass. As we game drive around we will undoubtedly find some amazing sightings of the resident game in the surrounding area.



Extreme Expedition Private Camp, Kogatende

You will return to camp in time to freshen up and enjoy a sundowner ready for dinner. Afterwards you will be able to enjoy the peace and quiet of the Serengeti sitting around your very own campfire.



Day 11: Serengeti North and Extreme Expedition Private Camp, Kogatende



Serengeti North Game Drive

As we game drive around we will undoubtedly find some amazing sightings of the resident game in the surrounding area and marvel at the serene and vast landscape in which to explore the wilderness of the Serengeti.



Extreme Expedition Private Camp, Kogatende

Kogatende in the north of the Serengeti is as raw as it can be in experiencing the natural world.

To be able to experience this rawness of “wild Africa,” a camping safari offers a more privileged and intimate perspective of the natural world and the people you will encounter. Canvas does not cut out the thousand sounds of Africa’s night and it allows access to the most remote corners of the African game lands.

Extreme Expedition Private Camp along the Mara River, in the wilds of the Serengeti, is as authentic as it can be and you will stay in comfort and style under the stars.

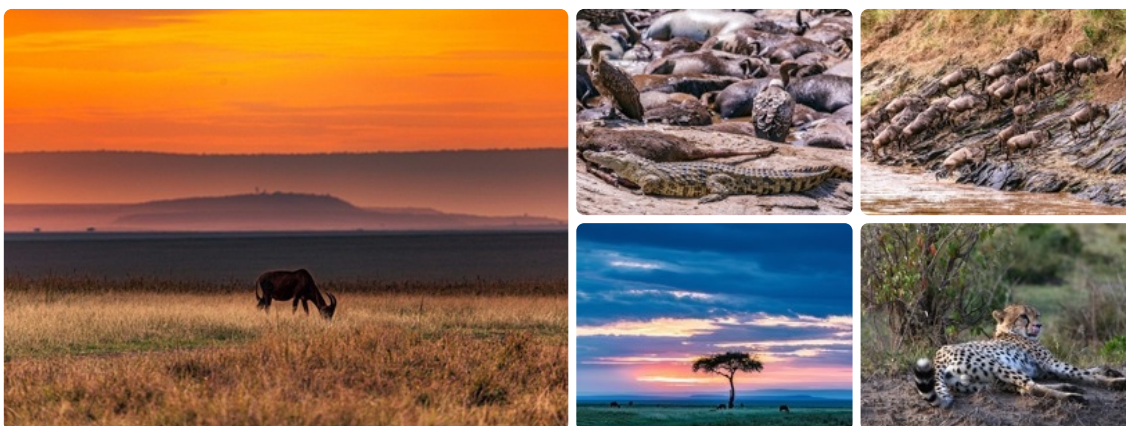


Day 12: Game drive to Lobo, Serengeti and Extreme Expedition Private Camp, Lobo Serengeti



Serengeti North Game Drive

In the morning we will break camp and work our way to the furthest north east corner of the Serengeti to explore this rarely visited area which is well off the beaten track.



Extreme Expedition Private Camp 2, Lobo Serengeti



In the late afternoon we will arrive at our next camp that was relocated from the Central Serengeti with our friendly crew in time for refreshments, dinner and of course the campfire under the African starlit night.



Day 12: Serengeti North and Extreme Expedition Private Camp, Lobo Serengeti



Serengeti North Game Drive

Another opportunity to find something amazing along the Mara River, will it be a rhino ambling along the banks, crocodiles waiting for the wildebeest or a stalking leopard.

The high season is the crossing of the migration but at other times of the year, the river is high and there is a large amount of amazing animals to encounter - the added benefit is a distinct lack of other jeeps in the hotspot areas and you will feel you have the Serengeti to yourselves.



Extreme Expedition Private Camp 2, Lobo

You will return to the friendly welcome awaiting you at camp ready for sundowners by the cocktail, charmed by the sounds of nature in the wilderness.

A freshen up and then dinner followed by nightcaps by the campfire under a starlit African sky with a comfy bed waiting for you for a great night's sleep.



Day 11: Travel to Lake Natron and Extreme Expedition Private Camp, Lake Natron



Journey to Lake Natron

In the morning we will say goodbye to the Serengeti and exit via Klein's gate in the north-eastern corner of the Serengeti to travel along some of the most dramatic bush terrain to arrive at sunset at your camp on Lake Natron.

After a hearty breakfast your jeep will make its way up the great rift valley wall on the road to Wasso, Soit Sambu and Ololosokwan. It is a full day's drive on sandy and bumpy tracks well off the beaten track.

Along the way you will witness dramatic landscapes and see an array of African plains game.



Extreme Expedition Private Camp, Lake Natron

Our Lake Natron Camp is a unique, ecological camp set in one of the most visually dramatic locations in the world! Home to the Maasai, abundant wildlife and over 1 million flamingos, our camp is perfectly situated for amazing adventures!

Lake Natron Camp is home to the hominid footprints, the largest breeding ground for Lesser Flamingo and in the shadow of Ol Doinyo Lengai, the only active volcano in the region and a demanding hike! It is truly an off the beaten track location to start or end a safari tour that includes the Serengeti and well worth it.



Day 12: Explore Lake Natron and Extreme Expedition Private Camp, Lake Natron



Lake Natron

There is so much to do here that a 2-day stay is essential: early morning or evening walks to the lake flats to see the flamingos; bird watching on the flats and marshes; visit the early-man footprints dating from between 5,000 and 20,000 years ago, research has confirmed these footprints to be rudimentary part of our evolution; take a half day hike to Ngare Sero waterfalls; early morning hike to the source of Ngare Sero for a breakfast with a view. All of these activities are included with your stay.

At additional cost, and in order to support the local community, you are able to have a genuine Maasai Village experience at Ngare Sero village (\$100 per group).

All the while there are magnificent views to be had of Oldoinyo Lengai - whose name means "mountain of God" in the Maasai language - the smoking top of which serves as a reminder that this is still an active volcano. We offer guided climbs which cost \$100 for an individual or \$70 per person for two or more and fees are paid directly to the village office.



Extreme Expedition Private Camp, Lake Natron

After a day's hiking you will be ready to return at sunset to relax at your private camp, freshen up and relax around the campfire ready for dinner.

Enjoy the African star-lit sky and listen to the intense activity of the wildlife in the distance. You can also enjoy a Maasai massage in your tent for \$30 per hour.



Day 13: Flight to Arusha and Hamerkop House, Gran Melia Hotel or Arusha Coffee Lodge



Drive to Arusha

After breakfast we will strike camp and say goodbye to the crew that will have looked after you during your safari. to Arusha and be transferred to your lodge to relax and reflect on the wonderful experience of a Tanzanian safari and share your favourite moments over a delicious dinner.

Explore Mto Wa Mbu



As we leave Lake Natron we will pass by the bustling town of Mto Wa Mbu which is a little micro hub for safari supplies and street food. We will take a break to amble around this fascinating town which is a hive of activity with safari-goers, guides and camp workers as they prepare for the adventure.

There is so much to explore in Mto Wa Mbu: youth art projects; the makonde wood carvers; you have the option of a banana plantation walk where you can enjoy a traditional family lunch and drink mbege, banana beer!

Your tour will finish in the bustling local market, where you can wander around stalls selling fruit and vegetables stalls, spices and meat. Your guide will stop and explain points of interest, and give you the opportunity to try and smell a variety of foods. A real treat for the senses!



Hamerkop House, Arusha

You will be transferred back to your exclusive villa, Hamerkop House, in time to enjoy the beautiful garden and swimming pool or you can take a walk to No 16 and enjoy spectacular sundowners with Mt Meru and Mt Kilimanjaro as your backdrop.

Your familiar staff will be waiting for you and your private chefs will prepare your evening meal and a delicious breakfast in the morning ready for your transfer to Kilimanjaro Airport for your onward journey.



Optional: Gran Meliá Arusha

Location

For those wishing to top and tail their safari with a familiar 5-star international resort-style hotel, then The Gran Meliá is my favourite of them all. A great vibe in the bar, superb views, various restaurants to choose from cuisine around the world, and is perfectly located in Arusha.

Facilities

This spectacular hotel is located between the Serengeti and Kilimanjaro National Parks, opening out onto all of Tanzania's majestic natural beauty. An oasis of five-star comfort and elegance, with extensive, unbeatable facilities, exclusive suites, and international cuisine, including the outstanding The Grill restaurant. With spa, infinity pool and gym. Perfect for a safari trip or luxurious business meeting.

The stunning Gran Meliá Arusha rises up between coffee and tea plantations. An exquisite first-class hotel with a wide range of luxurious comforts, located in a privileged natural environment. African exoticism and attention to detail, with a modern conference center and the personalized assistance of our RedLevel service.



Gran Meliá Arusha
Simeon Road, Arusha, Tanzania



Optional: Arusha Coffee Lodge

Lying on the gently rolling foothills that cascade down from the ever-present Mount Meru is the bustling and vibrant town of Arusha. It is here on the outskirts of this town, hidden amongst one of Tanzania's largest coffee plantations, that you will find Arusha Coffee Lodge, a perfect haven for relaxation either before or after any East African safari.

Comprising of 30 Plantation Houses that radiate out into the evergreen coffee fields, Arusha Coffee Lodge has been designed around the original landowner's home that dates back to the early 1900's.

Never far from the aroma of fresh coffee, the theme of coffee permeates throughout Arusha Coffee Lodge, reflecting in the colours and textures of the delightfully comfortable accommodations with beautifully appointed en suite bathrooms.



Day 14: Departure Day, Kilimanjaro Airport



Transfer to Kilimanjaro Airport

Sadly it is time to say goodbye and we hope that although you came as strangers, you will leave as dear friends as we welcome you back again soon.

We will schedule a VIP transfer from your lodge to Kilimanjaro Airport for your onward journey or flight home (approx 1.5 hours).

Safari njema!

Colin and the Extreme Team!

