



Colin Dobbyne  
Safari Specialist for Tanzania  
Extreme Expedition Tours Limited

+447966 402359  
[colin@extremeexpedition.tours](mailto:colin@extremeexpedition.tours)  
<https://www.extreme-expedition.com>



## **Safari Majani - Green Season 10 Nights High End Safari** **December to April**

'Majani' is the Swahili word for the leaves of trees and between December and March the southern Serengeti literally springs to life with fresh grasses attracting the great migration of wildebeest, zebras and gazelles. This is the time to appreciate the verdant beauty of the savannah, plains and crater with many offroad areas and less visitors generally, you will be spoiled with a high concentration of wildlife and at times feel completely alone in the wilderness.

With our accommodation partners we have created an incredible and authentic 9-night safari tour for the green season to have the best access to the wildlife and to relax in authentic camps with sunsets, cocktails, camp fires, a superb dinner and a good night's sleep; getting ready for the next day's adventure.

The tours include the very best wildlife experience that Tanzania has to offer such as the wonderful elephants of Tarangire wandering among the baobab trees, the big five in the Ngorongoro Crater caldera and the breathtaking Serengeti with its stunning views as we follow the great migration. Between January, February and March we will visit the Ndutu region during the spectacular wildebeest calving season.

## Trip Summary

---

---

### **DAY 1: Arrival Day and VIP Meet and Greet, Arusha Coffee Lodge**

Collection from Kilimanjaro or Arusha Airport and Transfer

Lunch at Arusha Coffee Lodge and visit Shanga Centre

Arusha Coffee Lodge

---

### **DAY 2: Drive to Tarangire National Park and Mpingo Ridge Lodge**

Tarangire National Park

Mpingo Ridge, Tarangire

---

### **DAY 3: Tarangire National Park and Mpingo Ridge Lodge**

Tarangire National Park

Mpingo Ridge, Tarangire

---

### **DAY 4: Journey to the Crater Via Mto Wa Mbu and Craters Edge Lodge**

Explore Mto Wa Mbu

Ngorongoro Crater View

Craters Edge

---

### **DAY 5: Ngorongoro Crater and Craters Edge Lodge**

Ngorongoro Crater Tour

Craters Edge

---

### **DAY 6: Drive to Ndutu and Lemala Ndutu Camp**

Ndutu, Southern Serengeti

Lemala Ndutu Camp

---

### **DAY 7: Ndutu Game Drive and Lemala Ndutu Camp**

Ndutu, Southern Serengeti

Lemala Ndutu Camp

---

### **DAY 8: Drive to the Serengeti and Nanyukie Lodge**

Serengeti Central Game Drive

Nanyukie Lodge

---

### **DAY 9: Central Serengeti and Nanyukie Lodge**

Serengeti Central Game Drive

Balloon Safari (Optional - \$650 extra per person)

Nanyukie Lodge

---

### **DAY 10: Fly to Arusha and Ngare Sero Mountain Lodge**

Flight from Seronera to Arusha

Ngare Sero Mountain Lodge

---

### **DAY 11: Departure Day**

Transfer to Kilimanjaro Airport

## DAY 1: Arrival Day and VIP Meet and Greet, Arusha Coffee Lodge



### Collection from Kilimanjaro or Arusha Airport and Transfer

We will be eagerly awaiting you just outside the arrivals hall with an SUV to welcome you to Tanzania and drive you directly to your luxurious lodge to relax and acclimatise to the magical atmosphere that is Safari Africa.



### Lunch at Arusha Coffee Lodge and visit Shanga Centre

Subject to flight times, we will drive to Arusha Coffee Lodge to check in and have lunch or a light snack and refreshments. The lodge is on the outskirts of the town, hidden amongst one of Tanzania's largest coffee plantations, a perfect haven for relaxation either before or after any East African safari.

In the grounds is the Shanga social enterprise which employs people with disabilities to create unique and high-quality handmade jewellery, glassware and homewares incorporating recycled materials. These products are sold in the Shanga shop in Tanzania, as well as around the world, with profits being reinvested back into developing opportunities to employ more people with disabilities. <https://www.shanga.org/>



### Arusha Coffee Lodge

Lying on the gently rolling foothills that cascade down from the ever-present Mount Meru is the bustling and vibrant town of Arusha. It is here on the outskirts of this town, hidden amongst one of Tanzania's largest coffee plantations, that you will find Arusha Coffee Lodge, a perfect haven for relaxation either before or after any East African safari.



## DAY 2: Drive to Tarangire National Park and Mpingo Ridge Lodge



### Tarangire National Park

Tarangire is one of my favourite parks and is the sixth largest park in the country with 2,850 square kilometres of wilderness.

Elephants, and other animals, are always confident of finding water in Tarangire and in the driest of seasons they will dig the river bed or visit the swamp, a sort of water tank for the region. In desperate times, the elephants will strip the bark from the Baobab trees that define Tarangire and squeeze out the water.

We will game drive to the lodge for lunch and a freshen up before going out in the afternoon for a game drive.



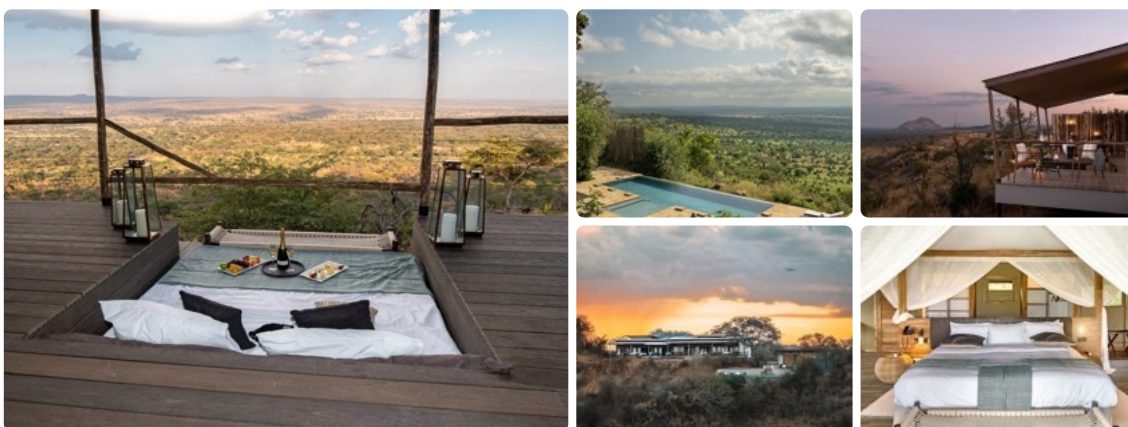


### Mpingo Ridge, Tarangire

Mpingo Ridge sits on top of an escarpment with sweeping views across the perennial Tarangire River and valley below and offers outstanding standards of comfort and service.

Each of the 15 spacious suites have been carefully positioned to maximize not only the sensational views over the Tarangire valley but also to take advantage of cooling breezes during warm weather.

It is the very best location in Tarangire, right at the heart of the park and the densest animal concentration, close to the river.



## DAY 3: Tarangire National Park and Mpingo Ridge Lodge



### Tarangire National Park

We will leave camp early with a breakfast hamper and game drive along the Tarangire River to meet the elephants as they venture down the river and we will rest at Silale swamp for breakfast in the bush.

We will return to the lodge for lunch and to relax before exploring the Kuru region and return via Poachers Hide for an incredible sunset.





## Mpingo Ridge, Tarangire

After the day's game drive we will return to the luxury of the Mpingo Ridge Lodge to enjoy a sundowner on your private terrace and look along the river and the incredible expanse of the Tarangire valley below.



## DAY 4: Journey to the Crater Via Mto Wa Mbu and Craters Edge Lodge



### Explore Mto Wa Mbu

As we leave Tarangire we will pass by the bustling town of Mto Wa Mbu which is a little micro hub for safari supplies and street food. We will take a break to amble around this fascinating town which is a hive of activity with safari-goers, guides and camp workers as they prepare for the adventure.

There is so much to explore in Mto Wa Mbu: youth art projects; the makonde wood carvers; you have the option of a banana plantation walk where you can enjoy a traditional family lunch and drink mbege, banana beer!

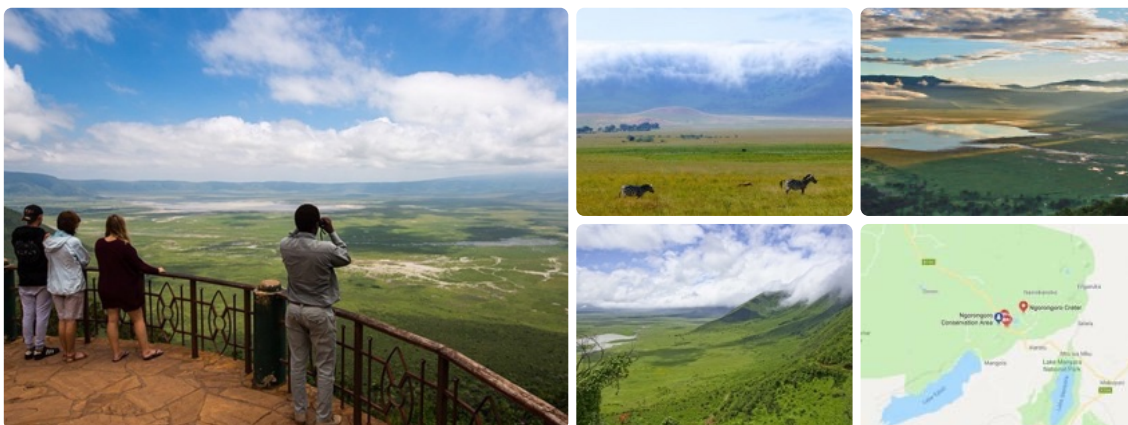
Your tour will finish in the bustling local market, where you can wander around stalls selling fruit and vegetables stalls, spices and meat. Your guide will stop and explain points of interest, and give you the opportunity to try and smell a variety of foods. A real treat for the senses!

Whenever you are ready, we will then venture off towards the crater to arrive at your next spectacular lodge in time for sundowners.



### Ngorongoro Crater View

The Ngorongoro Crater is the gateway to the Serengeti and we will stop at the view point to see the entire crater some 600 metres below. It is the world's largest caldera and hosts the highest concentration of wildlife in Africa.



### Craters Edge

Accommodations here is a harmonious fusion of spaciousness and opulence. Adorned with authentic African decor and modern amenities, the expansive suites provide panoramic views of the surrounding landscapes. Guests may indulge in the warmth of their in-room fireplace, allowing them to revel in the beauty of the region while cocooned in the comfortable embrace of their suite.

Being so close to the descent road, you will be able to be the first into the crater to enjoy an early morning safari as the wildlife wakes from its slumbers.





## DAY 5: Ngorongoro Crater and Craters Edge Lodge



### Ngorongoro Crater Tour

The Ngorongoro Crater is the world's largest intact and unfilled volcanic caldera and the Ngorongoro Conservation Area's main tourists' attraction. It is the largest and most scenic crater in the Ngorongoro Conservation Area, with a large concentration of wildlife. It is also one of Africa's Seven Natural Wonders due to its breathtaking natural features. The Ngorongoro Crater is known as a home to over 25,000 animals, including the big five; elephants, buffaloes, rhinos, lions and leopards.

Other animals found in this crater include hippos, hyenas, warthogs, zebras, elands, gazelles, wildebeests, just to name a few. This makes Ngorongoro Crater probably the best site in Tanzania to spot and watch the big five as well as other wild species more easily.



### Craters Edge

Inside the tent, guests will find a beautiful timber floor covered with comfortable rugs, creating a cosy and inviting atmosphere. The teak timber used externally is certified, ensuring a commitment to sustainability.

Crater's Edge is a gateway to the untamed beauty of Ngorongoro and the Serengeti beyond and the perfect place for adventure and relaxation for an unforgettable African safari.



## DAY 6: Drive to Ndutu and Lemala Ndutu Camp



### Ndutu, Southern Serengeti

The Ndutu plains is located in the Ngorongoro Conservation Area, on the outskirts of the Southern Serengeti plains. These plains are enriched with tremendous acacia trees, providing a panoramic view across Lake Ndutu and Masek at the other end. It is one of the best places in the Ngorongoro Conservation Area to spot predators and enjoy the stunning landscapes. Standing here means you're in the midst of a calving ground for migratory wild animals, specifically the wildebeest migration. It is typically composed of vast swaths of short grassland, soda-lake Masek, marshes, and woodland vegetation that support both residents and migratory animals.



### Lemala Ndutu Camp

The 12 tents of Lemala Tented Camp travel south between December and April to set up in Ndutu to catch the migration as they arrive to deliver their calves, it is in the heart of the best game viewing areas of the Southern Serengeti eco-system. The exact location varies from year to year, but we are always far enough away to remain discreet and not interrupt wildlife behaviour as the wildebeest mass across the plains. Here, in this immense remote wilderness, guests can enjoy fabulous landscapes and terrific game viewing with practically no crowds.





## DAY 7: Ndutu Game Drive and Lemala Ndutu Camp



### Ndutu, Southern Serengeti

While Ndutu is an excellent game viewing area throughout the year, the best time to visit the Ndutu plains is from the end of December, when the Great Migration herds begin to arrive from the north, until April, when millions of wildebeest, gazelles, and zebras begin their journey northwards again. Due to the seasonal rains, massive herds of wildebeest and zebra can be seen all over these plains at this time of year.

Thousands of calves are born within Ndutu during the calving season, making Ndutu a home for new creatures on Earth. Giraffe, impala, elephant, dik dik, lion, cheetah, leopard, hyena, bat-eared fox, genet, jackal, wildcat, and many other animals end up living in Ndutu. The plains, marshes, and lakes to woodland attract an abundance of bird species.



### Lemala Ndutu Camp

Lemala Ndutu camp is a luxury mobile tented camp offering an authentic bush experience, but the tents are spacious and each is furnished with two queen-size beds and all the little luxuries that make them surprisingly comfortable. After an evening game drive, your tent attendant ensures your safari shower is filled with hot water to wash away the dust of the African savannah. Tasty meals are freshly prepared, and the camp organizes great picnic breakfasts and lunches for those who want to go on extended full-day game drives. The communal areas have separate lounge and dining areas and are beautifully decorated with leather sofas, chandeliers, side cabinets, rugs, chests and a bar. In the evening, guests can gather around the campfire to enjoy pre-dinner drinks and canapes and sharing their safari stories.



## DAY 8: Drive to the Serengeti and Nanyukie Lodge



### Serengeti Central Game Drive

In the morning we will head off to the legendary Serengeti and enter at Naabi Hill gate. Meaning 'endless plains' in the Maasai language, the Serengeti is undoubtedly one of the world's most celebrated wilderness areas.

The Central Serengeti also has high-density game-viewing at all times and is well-known for its large concentration of cats, so much so that until recently this area was set aside for scientific research into predators, especially cheetah.





### Nanyukie Lodge

With canvas walls, cathedral-like tented ceilings and broad hardwood decks, guests at Lemala Nanyukie can expect a light contemporary décor in a palette of dazzling whites and neutral colours, with warmth introduced by textured accessories, luxurious upholstery, wooden furnishings, and well-executed lighting.

The 15 luxurious guest suites (13 standard suites + 1 x 2 bedrooomed suite) are spaced well apart for maximum privacy. Nanyukie redefines luxury tented lodges and is the place to relax and enjoy the african starlit night sky.

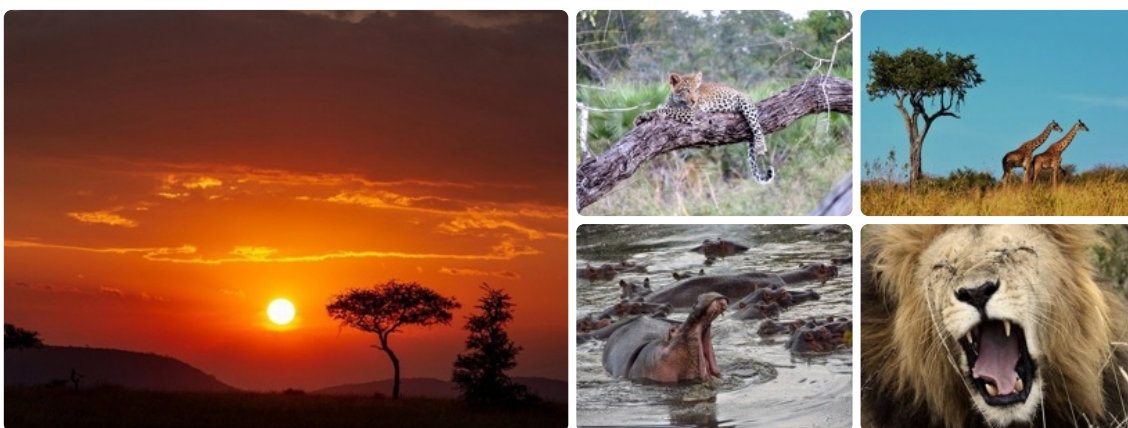


## DAY 9: Central Serengeti and Nanyukie Lodge



### Serengeti Central Game Drive

Setting off in the morning, we will explore the rocky kopjes, plains and wooded areas in search of the big 5. You're sure to see most if not all, but we might stumble upon an aardvark or the elusive leopard or even a serval or caracal cat. The beauty of the Serengeti is that you never know what you will find. there is always a surprise!



**Balloon Safari (Optional - \$650 extra per person)**

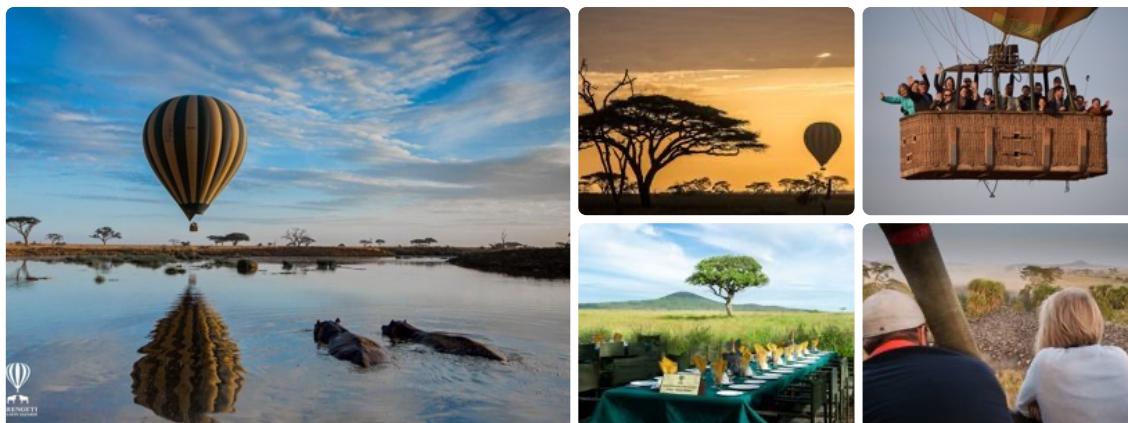
## PRICE

**\$650.00 USD**

Flying across the Serengeti, Tarangire or any Tanzanian National Park is simply a breathtaking experience. The silence is only punctuated by the occasional blast on the burners as the skilled pilot glides you across the plains and animals scattered below, oblivious to your presence.

The day requires an early start, around 4am, when it's still dark and you will lift off around sunrise, around 6:30am. After an hour or so, it is time to descend where you will be met by the ground crew for a champagne breakfast in the bush.

Depending on your itinerary, we will advise on the best areas to enjoy a balloon safari.

**Nanyukie Lodge**

Returning to the lodge to a warm welcome, you will be able to freshen up in your luxury vaulted tent where features include an oversized bed, spacious lounge, and generous bathroom with double vanity, indoor and outdoor showers and free-standing bathtub.

The delightful wooden deck has sunken seating, outdoor shower and stunning corner plunge pool with views directly across the Serengeti's magnificent grasslands.

**DAY 10: Fly to Arusha and Ngare Sero Mountain Lodge****Flight from Seronera to Arusha**

After a morning game drive we will catch a flight from the Seronera Airstrip to Arusha where a VIP SUV will be waiting for you to transfer you to Ngare Sero Lodge.





### Ngare Sero Mountain Lodge

Set in lush gardens amid forest and crystal clear waters on the slopes of Mount Meru, Ngare Sero Mountain Lodge is a wonderful place to relax and simmer in the immense beauty of East Africa. The Lodge has been adapted from an early colonial farmhouse built in the early 20th century and it is one of the oldest family lodges in Arusha. It offers 10 Garden Rooms, 2 Main House Suites and a Farm Cottage with 3 bedrooms. Ngare Sero has been providing personal service for its residents since 1974. Here you can spend the days amid nature, watching the changing colors of the Kilimanjaro glaciers while sipping drinks on the verandah or hiking in the forest inhabited by colobus and Sykes monkeys as well as hundreds of small animal and bird species. The Lodge is located only 30 minutes (20 km) away from Kilimanjaro International Airport and Arusha town centre and it is a perfect base while on safari in northern Tanzania.



## DAY 11: Departure Day



### Transfer to Kilimanjaro Airport

Sadly it is time to say goodbye and we hope that although you came as strangers, you will leave as dear friends as we welcome you back again soon.

We will schedule a VIP transfer from your lodge to Kilimanjaro Airport for your onward journey or flight home (approx 1.5 hours).

Safari njema!

