



Colin Dobbyne
Safari Specialist for Tanzania
Extreme Expedition Tours Limited

+447966 402359
colin@extremeexpedition.tours
<https://www.extreme-expedition.com>



Safari Anasa - Migration Season 14 Nights High End Safari with Beachfront Lodge on Zanzibar

June to October

Safari Anasa takes its name from the Swahili word for luxury. We have created this spectacular safari to experience the magic of Africa in some of the world's most romantic and exotic locations in sumptuous luxury and style.

The lodges and camps selected offer the ultimate in service and hospitality but also have something very unique to them that will create fond and lasting memories to keep for a lifetime.

The tours include the very best wildlife experience that Tanzania has to offer such as the wonderful elephants of Tarangire wandering among the baobab trees, the big five in the Ngorongoro Crater caldera and the breathtaking Serengeti with its stunning views as we follow the great migration to climax at the River Mara.

After an exhilarating safari, you will be whisked off to a paradise getaway on the wonderful beaches of Zanzibar.

This is the ultimate Tanzanian Experience.

Trip Summary

DAY 1: Arrival Day and VIP Meet and Greet, Arusha Coffee Lodge

Collection from Kilimanjaro Airport and Transfer

Lunch at Arusha Coffee Lodge and visit Shanga Centre

Arusha Coffee Lodge

DAY 2: Tarangire and Mpingo Ridge Lodge

Tarangire National Park

Mpingo Ridge, Tarangire

DAY 3: Tarangire and Mpingo Ridge Lodge

Tarangire National Park

Mpingo Ridge, Tarangire

DAY 4: Journey to the Crater Via Mto Wa Mbu and Craters Edge Lodge

Explore Mto Wa Mbu

Ngorongoro Crater View

Craters Edge

DAY 5: Ngorongoro Crater and Craters Edge Lodge

Ngorongoro Crater Tour

Craters Edge

DAY 6: Drive to the Serengeti and Nanyukie Lodge

Serengeti Central Game Drive

Nanyukie Lodge

DAY 7: Central Serengeti and Nanyukie Lodge

Serengeti Central Game Drive

Balloon Safari (Optional)

Nanyukie Lodge

DAY 8: Fly to Mara River and Kuria Hills

Flight from Serengeti Central to Serengeti North

Kuria Hills Lodge

DAY 9: River Mara Game Drive and Kuria Hills

Serengeti North Game Drive

Kuria Hills Lodge

DAY 10: River Mara Game Drive and Kuria Hills

Serengeti North Game Drive

Kuria Hills Lodge

DAY 11: Depart for Zanzibar and Xanadu Villas Zanzibar

Flight from Kogatende to Zanzibar

Xanadu Villas Zanzibar

DAY 12: Xanadu Villas Zanzibar

Xanadu Villas Zanzibar

DAY 13: Xanadu Villas Zanzibar

Xanadu Villas Zanzibar

Safari Blue Sea Adventure (Optional)

DAY 14: Xanadu Villas Zanzibar

Xanadu Villas Zanzibar

Departure Day

Transfer to Zanzibar Airport

DAY 1: Arrival Day and VIP Meet and Greet, Arusha Coffee Lodge



Collection from Kilimanjaro Airport and Transfer

We will be eagerly awaiting you just outside the arrivals hall with an SUV to welcome you to Tanzania and drive you directly to your luxurious lodge to relax and acclimatise to the magical atmosphere that is Safari Africa.



Lunch at Arusha Coffee Lodge and visit Shanga Centre

Subject to flight times, we will drive to Arusha Coffee Lodge to check in and have lunch or a light snack and refreshments. The lodge is on the outskirts of the town, hidden amongst one of Tanzania's largest coffee plantations, a perfect haven for relaxation either before or after any East African safari.

In the grounds is the Shanga social enterprise which employs people with disabilities to create unique and high-quality handmade jewellery, glassware and homewares incorporating recycled materials. These products are sold in the Shanga shop in Tanzania, as well as around the world, with profits being reinvested back into developing opportunities to employ more people with disabilities. <https://www.shanga.org/>



Arusha Coffee Lodge

Lying on the gently rolling foothills that cascade down from the ever-present Mount Meru is the bustling and vibrant town of Arusha. It is here on the outskirts of this town, hidden amongst one of Tanzania's largest coffee plantations, that you will find Arusha Coffee Lodge, a perfect haven for relaxation either before or after any East African safari.

Comprising of 30 Plantation Houses that radiate out into the evergreen coffee fields, Arusha Coffee Lodge has been designed around the original landowner's home that dates back to the early 1900's.

Never far from the aroma of fresh coffee, the theme of coffee permeates throughout Arusha Coffee Lodge, reflecting in the colours and textures of the delightfully comfortable accommodations with beautifully appointed en suite bathrooms.



DAY 2: Tarangire and Mpingo Ridge Lodge



Tarangire National Park

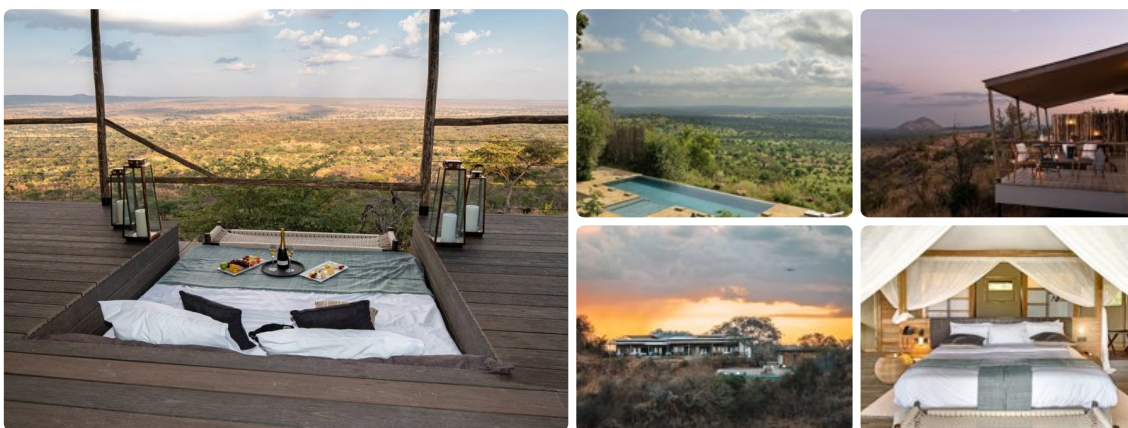
Tarangire is one of my favourite parks and is the sixth largest park in the country with 2,850 square kilometres of wilderness.

Elephants, and other animals, are always confident of finding water in Tarangire and in the driest of seasons they will dig the river bed or visit the swamp, a sort of water tank for the region. In desperate times, the elephants will strip the bark from the Baobab trees that define Tarangire and squeeze out the water.



Mpingo Ridge, Tarangire

Mpingo Ridge sits on top of an escarpment with sweeping views across the perennial Tarangire River and valley below and offers outstanding standards of comfort and service.



DAY 3: Tarangire and Mpingo Ridge Lodge



Tarangire National Park

We will spend the day exploring the further reaches of the Tarangire which hosts a vast range of wildlife and for the ornithologists there are also almost 600 species of birds to admire. Being so large you need to spend time in Tarangire, exploring the different areas, and my personal favourite is Silale Swamp which has a wonderful picnic area.



Mpingo Ridge, Tarangire

Each of the 15 spacious suites have been carefully positioned to maximize not only the sensational views over the Tarangire valley but also to take advantage of cooling breezes during warm weather.

A special feature is the private outside bathtub—perfect for soothing the soul and washing away the African dust after a day on safari. You are also welcome to enjoy ultimate relaxation with our exquisite spa treatments. Our expert therapists are dedicated to enhancing your well-being and helping you truly escape in nature.



DAY 4: Journey to the Crater Via Mto Wa Mbu and Craters Edge Lodge



Explore Mto Wa Mbu

As we leave Tarangire we will pass by the bustling town of Mto Wa Mbu which is a little micro hub for safari supplies and street food. We will take a break to amble around this fascinating town which is a hive of activity with safari-goers, guides and camp workers as they prepare for the adventure.

There is so much to explore in Mto Wa Mbu: youth art projects; the makonde wood carvers; you have the option of a banana plantation walk where you can enjoy a traditional family lunch and drink mbege, banana beer!

Your tour will finish in the bustling local market, where you can wander around stalls selling fruit and vegetables stalls, spices and meat. Your guide will stop and explain points of interest, and give you the opportunity to try and smell a variety of foods. A real treat for the senses!

Whenever you are ready, we will then venture off towards the crater to arrive at your next spectacular lodge in time for sundowners.



Ngorongoro Crater View

The Ngorongoro Crater is the gateway to the Serengeti and we will stop at the view point to see the entire crater some 600 metres below. It is the world's largest caldera and hosts the highest concentration of wildlife in Africa.



Craters Edge

Accommodations here is a harmonious fusion of spaciousness and opulence. Adorned with authentic African decor and modern amenities, the expansive suites provide panoramic views of the surrounding landscapes. Guests may indulge in the warmth of their in-room fireplace, allowing them to revel in the beauty of the region while cocooned in the comfortable embrace of their suite.

Being so close to the descent road, you will be able to be the first into the crater to enjoy an early morning safari as the wildlife wakes from its slumbers.



DAY 5: Ngorongoro Crater and Craters Edge Lodge



Ngorongoro Crater Tour

The Ngorongoro Crater is the world's largest intact and unfilled volcanic caldera and the Ngorongoro Conservation Area's main tourists' attraction. It is the largest and most scenic crater in the Ngorongoro Conservation Area, with a large concentration of wildlife. It is also one of Africa's Seven Natural Wonders due to its breathtaking natural features. The Ngorongoro Crater is known as a home to over 25,000 animals, including the big five; elephants, buffaloes, rhinos, lions and leopards.

Other animals found in this crater include hippos, hyenas, warthogs, zebras, elands, gazelles, wildebeests, just to name a few. This makes Ngorongoro Crater probably the best site in Tanzania to spot and watch the big five as well as other wild species more easily.



Craters Edge

Inside the tent, guests will find a beautiful timber floor covered with comfortable rugs, creating a cosy and inviting atmosphere. The teak timber used externally is certified, ensuring a commitment to sustainability.

Crater's Edge is a gateway to the untamed beauty of Ngorongoro and the Serengeti beyond and the perfect place for adventure and relaxation for an unforgettable African safari.



DAY 6: Drive to the Serengeti and Nanyukie Lodge



Serengeti Central Game Drive

In the morning we will head off to the legendary Serengeti and enter at Naabi Hill gate. Meaning 'endless plains' in the Maasai language, the Serengeti is undoubtedly one of the world's most celebrated wilderness areas.

The Central Serengeti also has high-density game-viewing at all times and is well-known for its large concentration of cats, so much so that until recently this area was set aside for scientific research into predators, especially cheetah.



Nanyukie Lodge

With canvas walls, cathedral-like tented ceilings and broad hardwood decks, guests at Lemala Nanyukie can expect a light contemporary décor in a palette of dazzling whites and neutral colours, with warmth introduced by textured accessories, luxurious upholstery, wooden furnishings, and well-executed lighting.

The 15 luxurious guest suites (13 standard suites + 1 x 2 bedrooomed suite) are spaced well apart for maximum privacy. Nanyukie redefines luxury tented lodges and is the place to relax and enjoy the african starlit night sky.

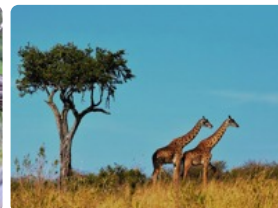


DAY 7: Central Serengeti and Nanyukie Lodge



Serengeti Central Game Drive

Setting off in the morning, we will explore the rocky kopjes, plains and wooded areas in search of the big 5. You're sure to see most if not all, but we might stumble upon an aardvark or the elusive leopard or even a serval or caracal cat. The beauty of the Serengeti is that you never know what you will find. There is always a surprise!



Balloon Safari (Optional)

PROVIDER	PRICE
Per person	\$650.00 USD

Flying across the Serengeti, Tarangire or any Tanzanian National Park is simply a breathtaking experience. The silence is only punctuated by the occasional blast on the burners as the skilled pilot glides you across the plains and animals scattered below, oblivious to your presence.

The day requires an early start, around 4am, when it's still dark and you will lift off around sunrise, around 6:30am. After an hour or so, it is time to descend where you will be met by the ground crew for a champagne breakfast in the bush.

Each flight is a different journey dictated by the direction of the wind, where the sights and sounds rise from the ground to meet you. We know where we've started but we don't know where we will return to earth. This is part of the adventure. Sometimes the basket will be gently brushing the tips of the grass and then climbing, climbing through the layers of air until you're high enough to see the curve of the horizon, painted gold and pink by the early sun. Our pilots not only have years of experience in harnessing the African wind, but are also interpreters of the wild lives in the ebb and flow of the landscape below.

Depending on your itinerary, we will advise on the best areas to enjoy a balloon safari.



Nanyukie Lodge

Returning to the lodge to a warm welcome, you will be able to freshen up in your luxury vaulted tent where features include an oversized bed, spacious lounge, and generous bathroom with double vanity, indoor and outdoor showers and free-standing bathtub.

The delightful wooden deck has sunken seating, outdoor shower and stunning corner plunge pool with views directly across the Serengeti's magnificent grasslands.

The main double-volume area features a comfortable lounge and bar, outdoor viewing deck leading to a refreshing swimming pool, and indoor and outdoor dining areas. A separate spa tent among the trees offers secluded relaxation.

We can also arrange special meals like bush breakfasts and lantern-lit dinners, and the campfire is perfect for a post-dinner drink and share tales about the day on safari.



DAY 8: Fly to Mara River and Kuria Hills



Flight from Serengeti Central to Serengeti North

After a morning game drive we will then catch a short flight from the Serengeti Central to Kogatende where you will be met by your guide in an open jeep, a spectacular experience to immerse in the most amazing safari country. After a game drive we will arrive at the lodge to relax.



Kuria Hills Lodge

Kuria Hills Lodge is remotely located in the Wogakuria Hills of the Northern Serengeti. A scenic region characterized by grassy rolling hills, open woodland and tree-lined watercourses, it is a habitat that attracts wildlife throughout the year. Lemala Kuria Hills is in close proximity to the Mara River on the Serengeti's border with Kenya's Maasai Mara, so is also within the main corridor of the world-famous wildebeest migration between July and October.

The lodge offers unrivaled luxury and sophistication, where you can choose to either relax in style or enjoy the Northern Serengeti's excellent game viewing (without the crowds) with our superb guides in 4x4 vehicles.

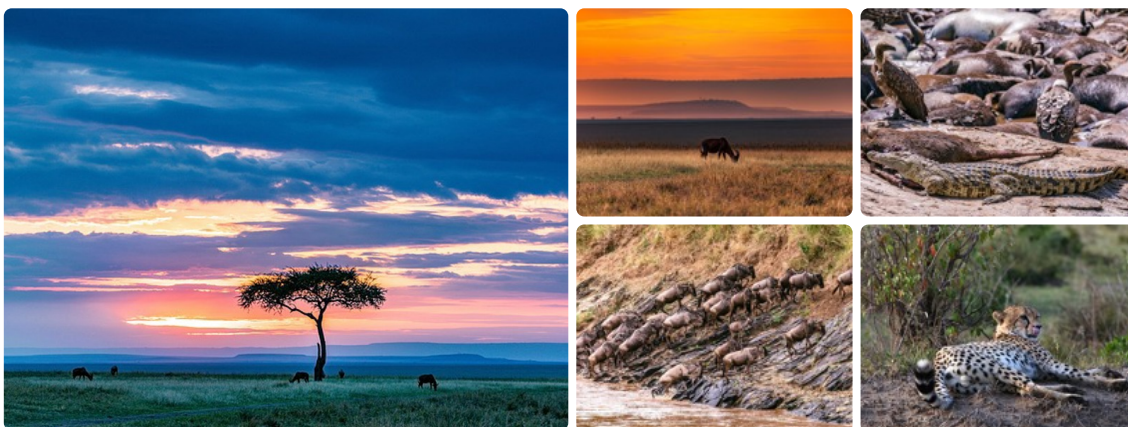


DAY 9: River Mara Game Drive and Kuria Hills



Serengeti North Game Drive

Between June and November is the time to be in this exciting area as thousands of wildebeest, zebras and gazelles will be edging to the river banks until the pressure is so strong behind that they launch themselves into the river to follow the fresh grass. As we game drive around we will undoubtedly find some amazing sightings of the resident game in the surrounding area.



Kuria Hills Lodge

There are several dining options at the lodge or out in the bush, and delicious meals include a choice of starters, main courses, desserts and house drinks. Afternoon tea is served before your game drive, and cocktails at sunset are taken on one of the kopjes with distant views of the Isuria Escarpment in the Maasai Mara. The Melengali Spa is in a separate tent where you can indulge in massages and manicures in a peaceful, natural setting.

Large granite boulders and kopjes are the prominent feature of Lemala Kuria Hills, and each of the 15 spacious, glass-fronted tented suites has been discreetly set amongst the giant rocks to ensure maximum privacy and spectacular views from the open decks. Each suite has an elegant and contemporary design, with comfortable, modern interiors enhanced by authentic African touches. The public areas are dominated by magnificent kopjes, and guests can enjoy the broad views of the grasslands from the bar, sitting and dining areas and swimming pool.



DAY 10: River Mara Game Drive and Kuria Hills



Serengeti North Game Drive

We will again explore the northern Serengeti to meander between the vast herds of the wildebeest as they amass on the banks of the river. A scenic region characterized by grassy rolling hills, open woodland and tree-lined watercourses, it is a habitat that attracts wildlife throughout the year. The Mara River on the Serengeti's border with Kenya's Maasai Mara is the main corridor of the world-famous wildebeest migration between July and October.



Kuria Hills Lodge

15 glass-fronted suites furnished with twin or super-king size beds offer: En-suite bathroom with flush toilet, hot shower and freestanding bathtub, plus an outside shower. All suites have plunge pools.

The main areas include a combined lounge and bar, inside and outside dining facilities, a reception and gift shop and the main swimming pool with sundeck adjoining main area.



DAY 11: Depart for Zanzibar and Xanadu Villas Zanzibar



Flight from Kogatende to Zanzibar

After a morning game drive we will catch a flight from the Kogatende Airstrip to Zanzibar where a VIP SUV will be waiting for you to transfer you to the resort.



Xanadu Villas Zanzibar

Mawingu Villa (Swahili for clouds) is the latest in the Xanadu collection, spectacularly positioned and the largest 1 bedroom villa featuring an outside lounge area with superior ocean view and private plunge pool. It is elevated to benefit from the majestic ocean in front and has its own private beach area. The extremely ample suite, complete with hand carved dhow wooden headboard, has an extra sized bathroom. This villa offers opulence while submerging in the lush tranquility of the island beauty. This is the most perfect honeymoon villa to indulge in romantic dinners, with the stars dancing overhead while the moon plays on the horizon as it teases the evening laying out its pathway across the ocean.



DAY 12: Xanadu Villas Zanzibar



Xanadu Villas Zanzibar

Xanadu follows the philosophy of clean, fresh, and healthy cuisine that incorporates the best flavours that Zanzibar has to offer. A skilled kitchen team delivers world-class du jour menus, freshly prepared, combining skills and well-established culinary practices to the freshest produce available.

The team of international and local chefs combine their skill-sets and international influences with the freshest, locally sourced ingredients for a tailor-made dining experience. Our current team consists of Tanzanian, South African, and Kenyan nationals, creating a fusion of skills and flavors.



DAY 13: Xanadu Villas Zanzibar



Xanadu Villas Zanzibar

Beautify yourself at the Luxury Kiota Spa. Xanadu Villas luxury secluded spa is the place to relax, revitalize and breathe again. A way to find physical, emotional and spiritual balance via a combination of natural products and treatments. Products used by our professional therapists are from Africology or locally sourced.

Built right on the beach the spa houses a couples treatment room, changing room and facilities as well a private deck where treatments can be enjoyed in the ocean breeze.

Our clients deserve only the best. The majority of the spa products are from the world famous Africology range. These products are supplemented by organic and locally produced products, carefully sourced by the spa team.



Safari Blue Sea Adventure (Optional)

PRICE

\$550.00 USD

The Safari Blue Experience is an unmissable day excursion exploring the protected waters of Zanzibar. You will be transferred to the beach where the mahogany traditional Dhow boats will be waiting and fitted with snorkels, masks and flippers. Snorkelling is of course optional, but the sailing alone is a wonderful experience and complimentary drinks are onboard.

This exclusive day trip allows you private use of a crewed Dhow boat and at midday, you will land at a private beach for the most extraordinary seafood barbecue and relax on the white sands before returning to Zanzibar where you driver will be waiting to return you to the hotel.

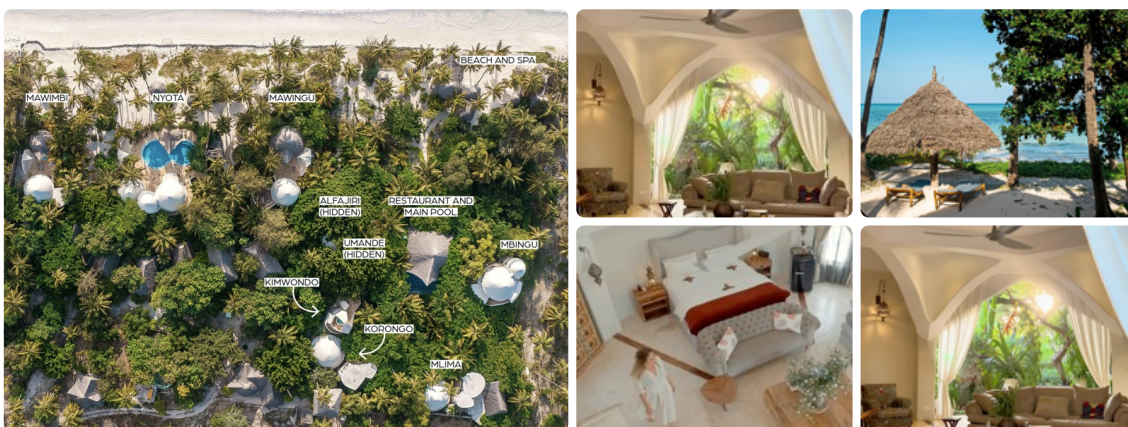


DAY 14: Xanadu Villas Zanzibar



Xanadu Villas Zanzibar

Mawingu is an exceptional villa and exceeds tranquility, luxury and expectation. Nine uncompromising villas on a stretch of pristine white sandy beach. Unmatched in Zanzibar, Xanadu has been crafted holistically out of a desire to breathe.



Departure Day



Transfer to Zanzibar Airport

Sadly it is time to say goodbye and we hope that although you came as strangers, you will leave as dear friends as we welcome you back again soon.

We will schedule a VIP transfer from your hotel to Zanzibar airport for your onward journey or flight home (approx 1.5 hours).

Safari njema!



